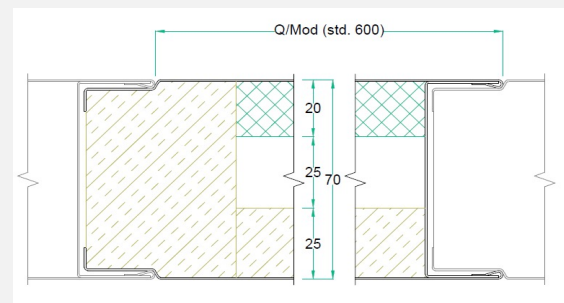
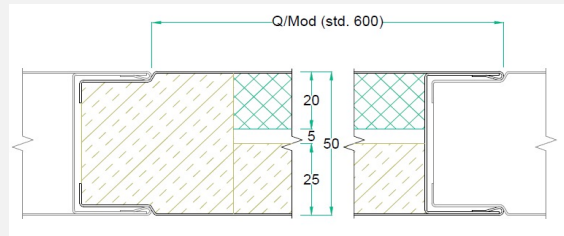
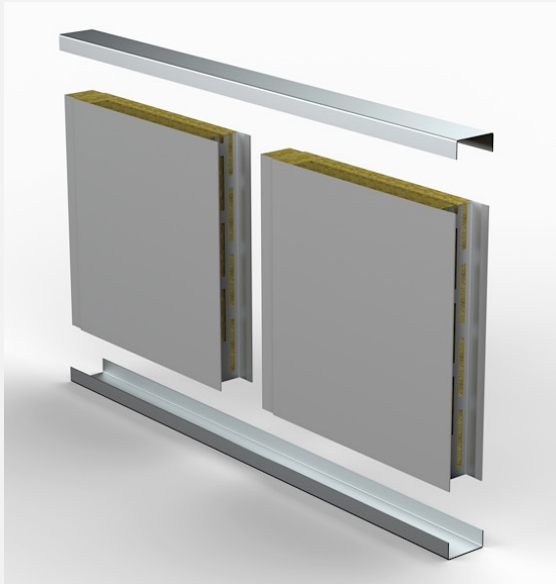


Q-PANEL



Panel type	Q	Q	Q
Tykkelse (mm)	50	50	70
Std. modulbredde (mm)	600		
Lengde (mm)	Opp til 6000		
Kjernemateriale	Mineralull		
Kjernemateriale, tetthet (kg/m ³)	150, 245		
Vekt (kg/m ²)	19.8	21.4	20.0
Lydreduksjon Rw (db)	43	46	45
U-verdi (W/m ³ K)	0.64	0.64	0.64
Brannklasse	-	-	-
Reaksjon ved brann	A2-s1, d0		
Sertifikater	EN 14509		